



## But first: Skills. Personality.

In a rapidly changing world, the skills needed are subject to constant change. What matters is **how people tick** in order to choose them for positions and development steps. What companies can rely on are the **character traits** of the people they (want to) work with. Find out what really matters – and who is worth investing in!

**With the help of AI-supported employee diagnostics, you can open up a whole new world of employee insights.**



Optimism



Self-efficacy



Self-centeredness



Resilience



Open-mindedness

Are you tired of expensive and ineffective assessments and personality tests that are useless due to desired answers? – Then AI comes to your rescue. State-of-the-art employee diagnostics show you what you really want to know about (future) employees so that individuals and the organization as a whole can thrive.

## Find the right match between personality and position.

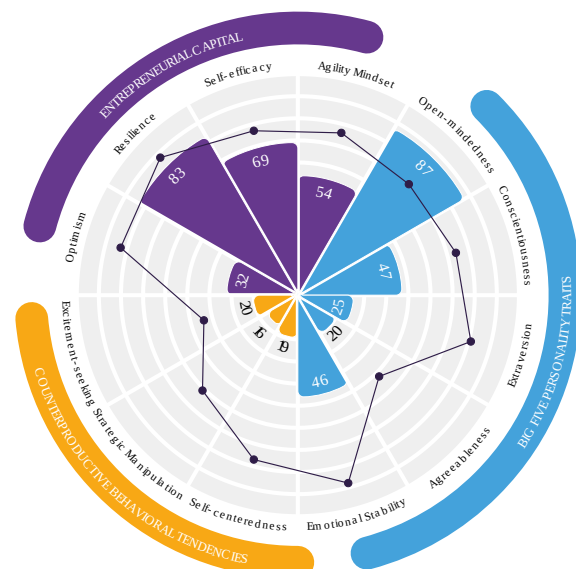
The benefits of **AI-based** personality analysis:

- 👍 It is done indirectly with natural language analysis.
- 👍 It is fair.
- 👍 It is not biased.
- 👍 It is much more cost-effective than traditional assessments.

## Information beyond the visible

Zortify's AI measures **personality traits and states** that predict success in the workplace, using a unique combination of:

- **Big Five** personality traits
- **Entrepreneurial Capital** personality states
- **Counterproductive Behavioral** tendencies
- **Preferred Performance Contributors** (PPCs)





With zortify's state-of-the art AI technology, new, exciting fields of application are emerging at the cutting edge of your current challenges as HR experts:

- **zortifySELECT** - Find the right people with the right mindset for the right position.
- **zortifyGROW** - Select and develop talent and managers for positions.
- **zortifyTEAM** - Build high-performance teams and improve collaboration.
- **zortifyLEADER** - Build new leadership and feedback structures.
- **zortifyCULTURE** - Measure and improve corporate cultural factors.

”



**Zortify helps us identify exactly the right people with the open mindset that is so important to us.**

Salonkee

**Sofia Leczano Kaiser**

Senior People & Operation Manager @Salonkee

## AI for Good

Zortify is not only one of the most innovative start-ups in Luxembourg, but also a certified research institution. With our 25-strong team we want to develop AI ethically and make it explainable. That's why we invest in AI research and integrate it into our products.



RIISING HR TECH  
OF THE YEAR

**Do you want to boost your HR work?  
– Get in touch.**

**Sonja Becker**

Sales & Business Development Manager

[sonja@zortify.com](mailto:sonja@zortify.com)

**Schedule a meeting!**



**They trust zortify's AI-based diagnostics**



LUFTHANSA GROUP

SENEC

GANT

Thalia

VINCI

Salonkee

ada